

**HAPPY FRAGGING!**

Welcome and thank you for purchasing your new FragFX SHARK Classic for the Sony PlayStation 3, PC and MAC.

The FragFX SHARK classic is specifically designed for the Sony PlayStation 3, PC / MAC and compatible with most games, however you may find it's best suited to shooting, action and sport games. To use your FragFX SHARK classic, you are expected to have a working Sony PlayStation 3 console system.

For more information visit our web site at [www.splitfish.com](http://www.splitfish.com). Please read the entire instruction - you get most out of your FragFX SHARK classic.

Happy Fraggling!

**GET YOUR DONGLE READY****Select Platform Switch Position the Dongle**

- PS3**
- 'Gamepad mode' for function as a game controller
  - 'Keyboard Mode' for chat and browser only
- PC / Mac**
- 'Gamepad mode' works if the game supports 'gamepads'
  - 'Keyboard mode' mouse and keyboard

A change from 'Gamepad Mode' to 'Keyboard Mode' (or the other way round) needs to be done while the dongle is unplugged.

**Plug-In the Dongle - LED Status**

Upon plugging the dongle into PC/Mac or PS3 the LED's will flash for a short moment to indicate that it was recognised by the PC/Mac or PS3.

- blue LED for Frag Chuck
- green LED for Mouse

**GET YOUR FRAG CHUCK AND MOUSE READY**

- insert 1xAAA battery\* into the FragChuck, insert 1xAAA battery\* into the Mouse
- switch on the FragChuck and the mouse, and both LED on the dongle alight
- when the battery is weak, the Fragchuck/Mouse LED will glow permanently to indicate a low battery.
- If the battery is too weak, the LED will not turn on at all or the unit is disconnected (see REPAIR CONNECTION procedure)

\* please use Alkaline or NiMH rechargeable batteries with 2000 mAh for best performance

**START PLAYING ON THE PS3**

Press 'Select', and you are ready to go and play

**BEST SETTINGS FOR PS3**

We recommend you set the In-Game sensitivity to maximum (or close to max.). The adjustment wheel (controller dial) function is used to tune the 'dead zone'. The 'dead zone' is an area around the center of the analog stick (in the Shark's case the mouse movement) which allows for the aim to rest without the on screen reticule moving all over the place. You can adjust this in a way to get pixel point accuracy. There are two dead zone filters, one on the dial position between 0 and 5, the other between 5 and 9.

If there is no (or barely any) movement on the screen when you move the mouse, the setting is too high (ex: 5 or 9). If movement is direct but the crosshair jumps, the sensitivity is set too low (ex: 0 or 6). The best setting will vary from gamer to gamer, please check out [www.splitfish.com](http://www.splitfish.com) for recommended game settings.

**PROGRAM SPECIAL FUNCTIONS (PS3, PC, MAC)****The special functions are programmed to the D-pad**

All special functions are accessed by pressing FRAG BUTTON + SELECT BUTTON at the same time. After pressing 'Frag' button & 'Select', the LEDs on the Fragchuck (FX-Button) and the Mouse (Splitfish Logo) light up at the same time (special functions cannot be programmed to the 'Frag' and 'select' buttons).

You can also program the special functions while not in game.

**SPECIALFUNCTION****STICK SWAP****BUTTON PRESSES**

- 1) FRAG BUTTON + SELECT
- 2) Press D-pad up for Stick Swap
- 3) FRAG BUTTON + SELECT to engage Stick Swap

**LED-STATUS**

Slow blinking  
quick blinking

**RAPID FIRE**

3 levels

- 1) FRAG BUTTON + SELECT
- 2) Press D-pad right for Rapid Fire
- 3) select the button you wish to program the RF to
- 4) Pressing the button again increases the Rapid Fire rate by one level.
- 5) FRAG BUTTON + SELECT to engage Rapid Fire

Slow blinking  
constant light  
quick blinking  
blink speed  
changes acc. to level

**BUTTON REMAPPING**

- 1) FRAG BUTTON + SELECT
- 2) Press D-pad down for button remapping
- 3) Press the 2 buttons you want to swap.  
Ex: R1 & R2...
- 4) FRAG BUTTON + SELECT to finish

Slow blinking  
constant light  
slow glowing  
fast reverse glowing

In order to remap more than 2 buttons, keep repeating step 3) before ending the procedure with step 4).

**MACRO**

(3 Macros at 10 actions)

- 1) FRAG BUTTON + SELECT
- 2) Press D-pad left for Macro
- 3) Choose and press desired button that will activate macro in game (eg. Mouse wheel left/right click etc.)
- 4) Press macro sequence (max. 10 buttons)
- 5) FRAG BUTTON + SELECT to enable Macro

Slow blinking  
constant glowing  
slow glowing  
quick blinking

3 Macros are programmable & programming a 4th macro will overwrite the oldest(1st) macro.

**ERASE SINGLE FUNCTION**

- 1) FRAG BUTTON + SELECT
- 2) Press D-pad (up/down/left/right) – depending on which function needs to be erased
- 3) FRAG BUTTON + SELECT to finalize

Slow blinking  
constant blinking  
Slow blinking

**FACTORY RESET**

- 1) FRAGBUTTON+SELECT
- 2) Press & hold analog stick(L3) & Mouse-Wheel for 3 seconds

Blinking,  
getting faster  
and goes out

**REPAIR CONNECTION BETWEEN DONGLE AND MOUSE/CHUCK**

Should your dongle light up, but not connect to either mouse or chuck or both, the unit needs unpairing and pairing. This process should only have to be done once.

**1) unpair the mouse (switch OFF the Chuck):**

- Switch on the mouse
- Press R1, R2, mousewheel, start, G, A at the same time
- Switch the mouse off, and on again. The blue LED should now be blinking
- The mouse is now unpaired, and ready to be paired again

**2) pair the mouse**

- (Switch on the mouse)
- Insert the dongle into the PC or PS3
- Hold the mouse close (~10cm/~4inch) to the dongle, and press either F, R, A or G button
- The LED on the mouse should dim out and the green LED on the dongle should light
- *If not, repeat the procedure*

**3) unpair the chuck (switch OFF the mouse):**

- Switch on the chuck
- Press F, L1, L2, select, FX, L3(press stick) at the same time
- Switch the chuck off, and on again. The blue LED should now be blinking
- The chuck is now unpaired, and ready to be paired again

**4) pair the chuck**

- (switch on the chuck)
- Insert the dongle into PC or PS3
- Hold the chuck close (~10cm/~4inch) to the dongle, and press L1 button
- The LED on the chuck should dim out and the blue LED on the dongle should light
- *If not, repeat the procedure*

**TIPPS FOR USING SPECIAL FUNCTIONS:**

Rapid Fire (RF): Should you pick up a weapon (eg claymore) when pressing the d-pad just change to the desired weapon (eg gun) for the RF. Then press eg R1 (or any other) to allocate RF that button. RF will be saved to the last pressed button.

pMo (programmed motion) is programmed through a macro\*, as shaking the Fragchuck acts as a button itself.

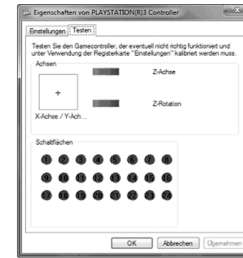
- 1) FRAGBUTTON+SELECT
- 2) D-pad left for Macro
- 3) Shake FragChuck (= choose and press desired button that will activate macro)
- 4) Melee Button (R3 in MW2) (= press macro sequence)
- 5) FRAGBUTTON+SELECT to enable pMo macro

\* alternatively pMo can also be programmed through button swap.

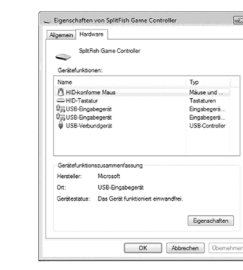
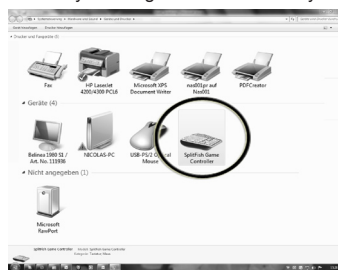
Mouse Wheel - R3 (press down) is a click of the mouse wheel. You can remap buttons to scroll up/down, click left/right (eg. Change weapon on scroll wheel analog PC gamer), or trigger macros through these buttons.

**START PLAYING ON THE PC/MAC****Dongle switched to – Gamepad mode**

Below is illustrated how your FragFX Sharks appears in your system setting. Please note that when using it for the first time, drivers install automatically. Your FragFX Shark acts as a Gamepad now.

**START PLAYING ON THE PC/MAC****Dongle switched to – Keyboard mode**

Below is illustrated how your FragFX Sharks appears in your system setting. The buttons on your FragChuck act now as your keyboard!

**FOR MORE INFORMATION CONTACT SPLITFISH TECHNICAL SUPPORT VIA HTTP://SUPPORT.SPLITFISH.COM.****CARE and MAINTENANCE**

Under the right side mouse is a small red sensor that needs to be clear of obstructions. Small hairs, fuzz, dust or dirt can deflect the light sensor and cause the controller to have erratic behavior. Use a dry cue-tip to carefully clean the lens from obstructions - do not use wet cleaning to clean the optical components.

**WARRANTY and CONDITIONS****There are the usual legal regulations for guarantee and warranty.**

**Hardware:** Ikerterc Ltd. warrants to the original end user („Customer“) that new SplitFish branded products will be free from defects in workmanship and materials, under normal use, for one year from the original purchase date.

**Exclusions:** This warranty excludes (1) physical damage to the surface of the product; (2) replacement or repair of the wires; (3) Water or fluid related damage; (4) damage caused by misuse, neglect, improper installation or testing, unauthorized attempts to open, repair or modify the product; or any other cause beyond the range of the intended use; (5) damage caused by accident, fire, power changes other hazards, or acts of god; or (6) use of the product with any non-fossil device or service if such device or service causes the problem. This warranty is limited to the hardware only.

**Replacement:** Products or parts may be new or reconditioned or comparable versions of the defective item. Ikerterc warrants any replaced or repaired product, or part for a period of forty-five (45) days from shipment, or through the end of the original warranty, whichever is longer. Customers must provide dated proof of purchase (as stated below) in order to receive warranty protection through the end of the original warranty period.

**Obtaining Warranty Service:** Customer must contact technical support via [www.splitfish.com](http://www.splitfish.com) within the applicable warranty period to obtain warranty or non-warranty service.